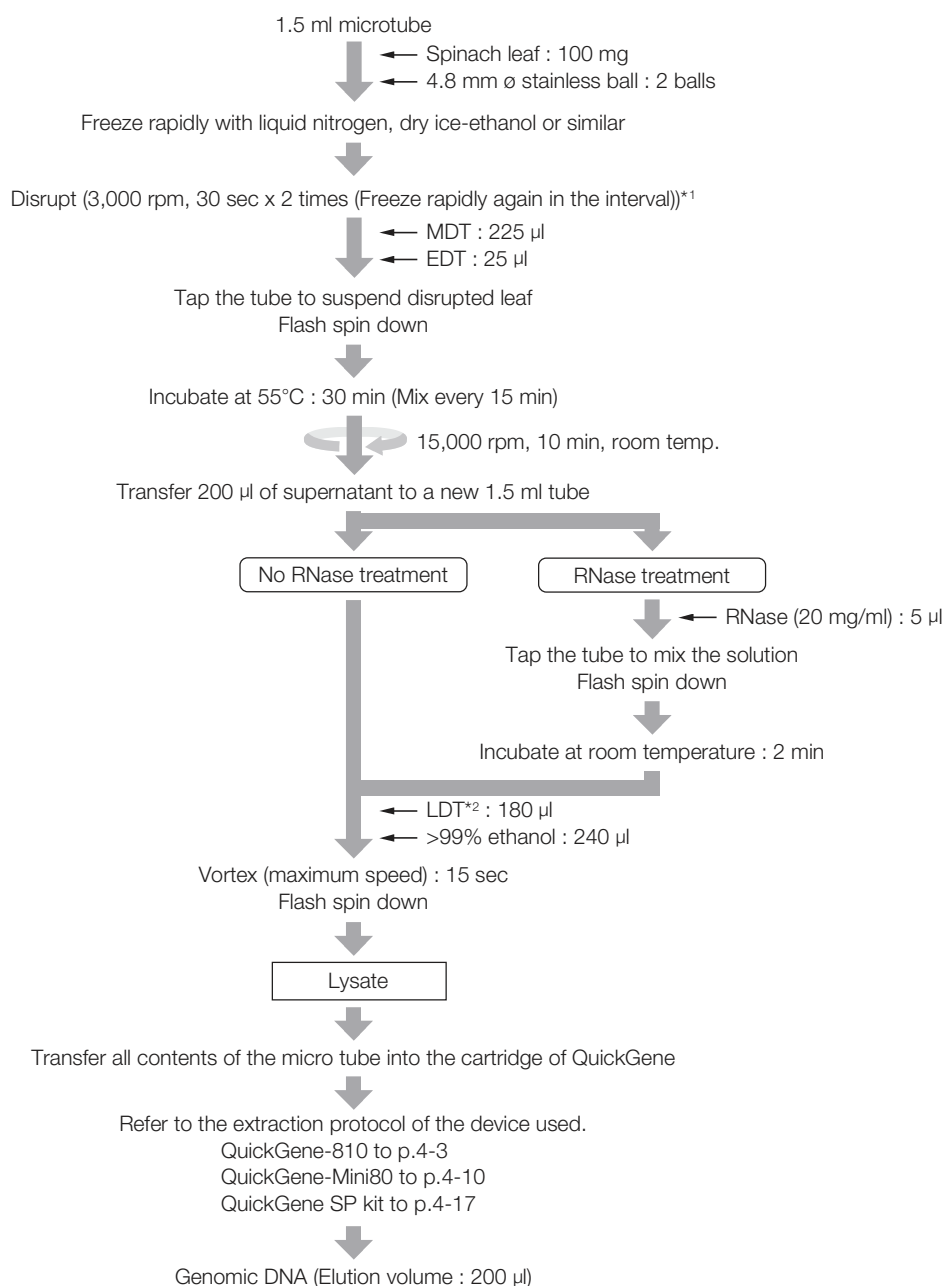


Genomic DNA Extraction from Spinach Leaf

Protocol

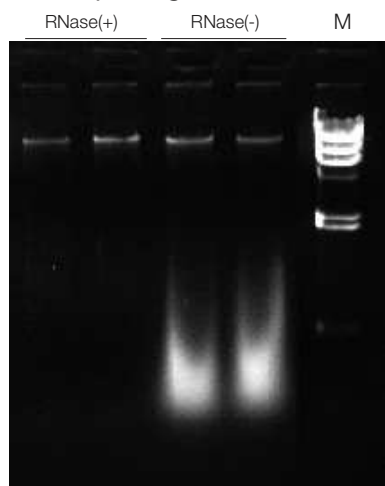


*1 MS-100 (Tomy Seiko Co.) was used for disruption.

*2 If precipitate is generated after LDT addition, add >99% ethanol after dissolving precipitate by incubation at 70°C for several minutes.

Results

Electropherogram



Electrophoresis condition : 1% agarose / 1 x TAE

M : λ - *Hind* III

The yield of genomic DNA

RNase (+)	3.6 μ g	4.0 μ g	2.8 μ g	6.9 μ g
RNase (-)	39.6 μ g	14.8 μ g	44.8 μ g	52.0 μ g

Protein contamination : A260/280

RNase (+)	1.94	1.87	1.80	1.97
RNase (-)	2.22	2.16	2.24	2.24

Chaotropic salt contamination : A260/230

RNase (+)	1.76	1.89	1.77	2.04
RNase (-)	2.24	1.99	2.26	2.29

Other

No Data

Common protocol is usable for the following

No Data