



QuickGene

QuickGene Series

## Application Guide

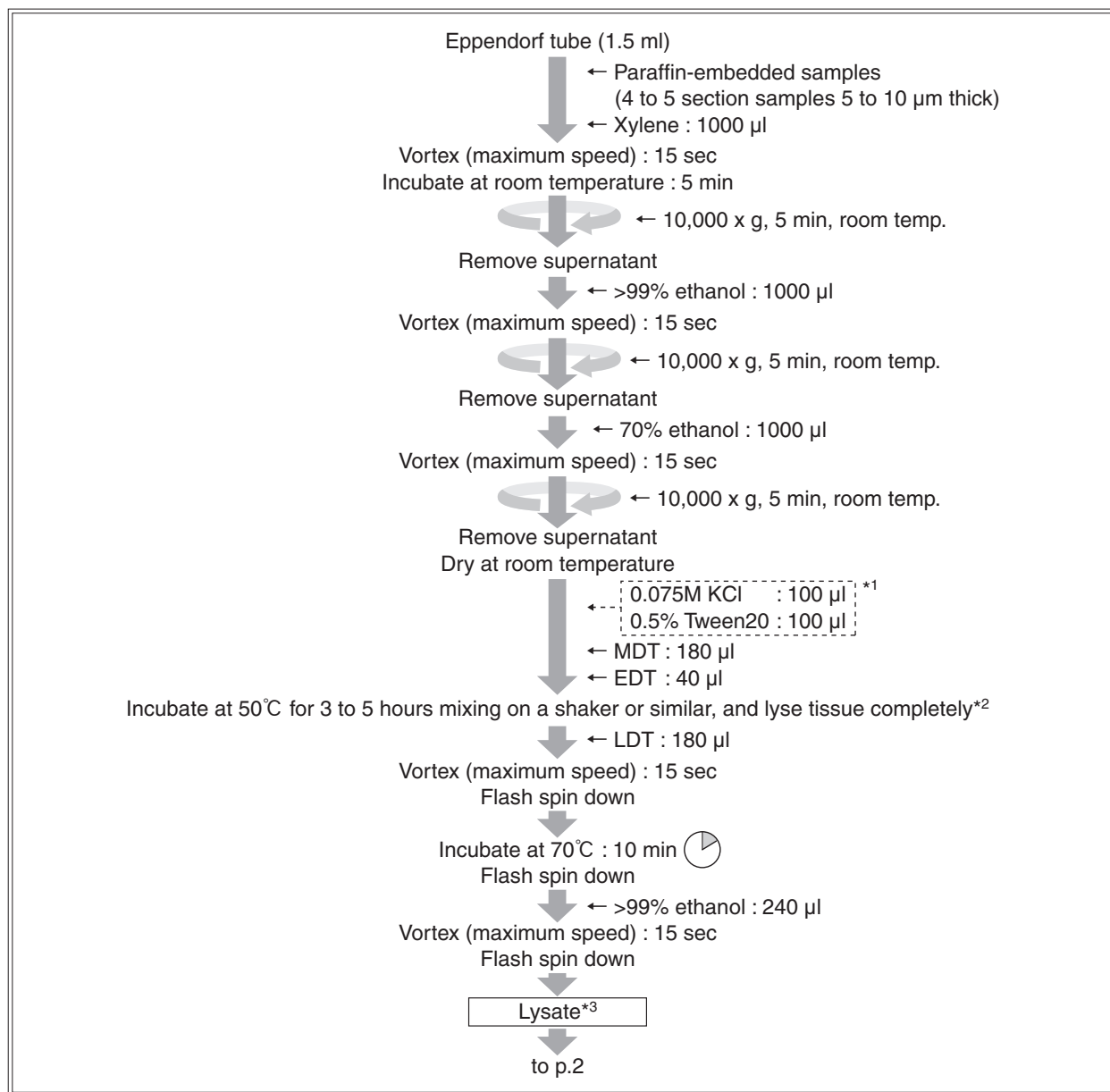
## Genomic DNA Extraction from Paraffin-embedded Samples

Kit : QuickGene SP kit DNA tissue (Spin method)

## Summary

Enables easy and rapid genomic DNA extraction from paraffin-embedded samples

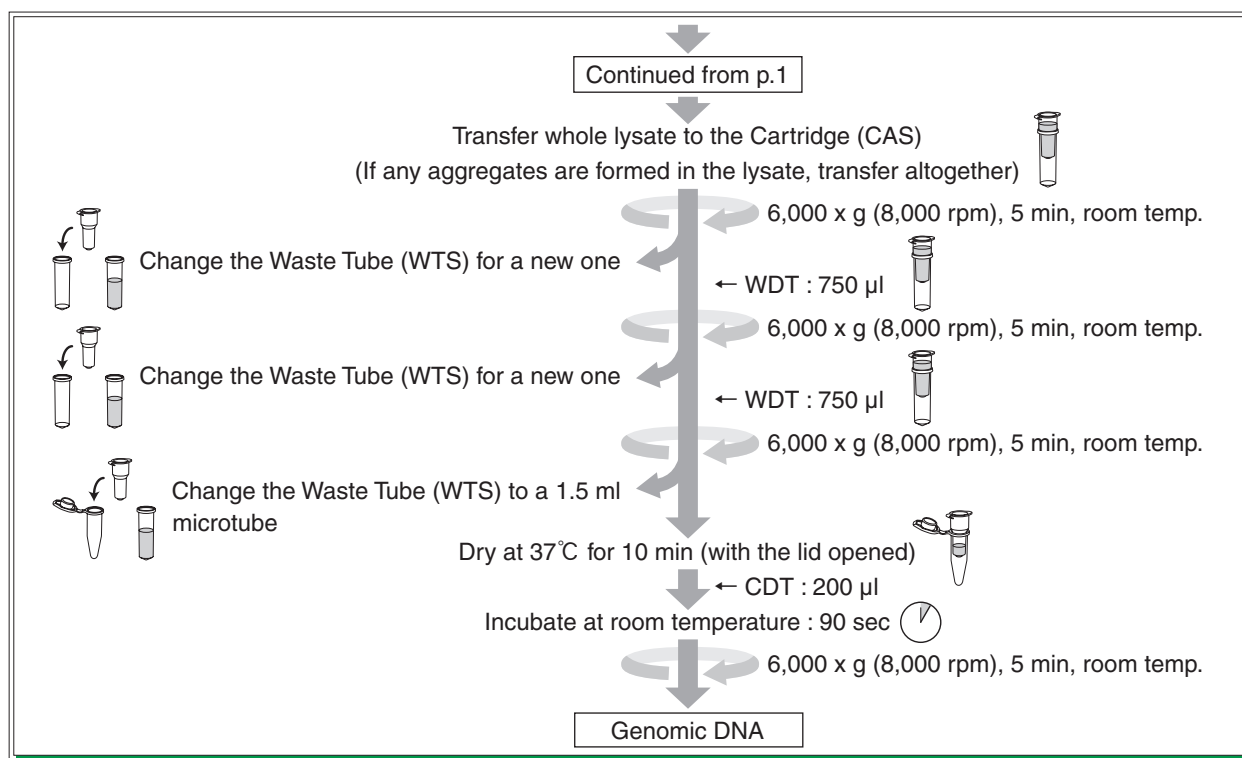
## ● Protocol



\*1 : Addition of these reagents yields more depending on tissue.

\*2 : In the case of hard tissue, increase of EDT yields more. Please note that lysing overnight decreases yield.

\*3 : Perform extraction within 30 min after lysate preparation.



## Results : Genomic DNA extraction from paraffin-embedded samples

Genomic DNA was extracted from paraffin-embedded samples using QuickGene SP kit DNA tissue and Spin column method (A company).

### ● The yield and purity of genomic DNA

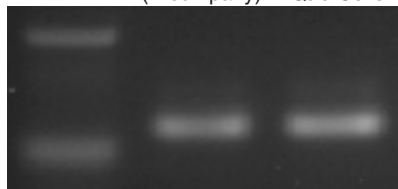
Sample	Yield		Purity(A260/280)	
	Cancer 1	Cancer 2	Cancer 1	Cancer 2
QuickGene	1.43 µg	0.58 µg	1.99	1.90
Spin column method (A company)	1.36 µg	0.44 µg	1.98	2.41

Use of QuickGene SP kit DNA tissue enables extraction of high-purity genomic DNA with little contamination of protein, irrespective of kind of cancer and even samples which yield of genomic DNA is low. In addition, it was confirmed that DNA extraction was possible in good reproducibility even in a high number of experiments.

### ● PCR

*β-actine* gene was detected for genomic DNA extracted from paraffin-embedded samples using QuickGene SP kit DNA tissue and Spin column method (A company).

Cancer 1      Spin column method  
M      (A company)      QuickGene



*β-actine* gene was detected for each genomic DNA.

Contributed by Mr. Akima Harada, Department of Surgery, Nippon Medical School

#### \* Trademark and exclusion item

Right to registered names etc. used in this Application Guide is protected by law especially even in the case of no denotation.

# FUJIFILM

FUJIFILM Corporation 7-3, Akasaka 9-Chome, Minato-ku, Tokyo 107-0052, Japan, Tel : +81-3-6271-2158, Fax : +81-3-6271-3136 • E-mail : sginfo@fujifilm.co.jp

FUJIFILM Europe GmbH Heesenstr.31, 40549 Dusseldorf, Germany, Tel:+49-211-5089-174, Fax:+49-211-5089-9144 • E-mail:lifescience@fujifilmeurope.de

FUJIFILM UK Ltd. Unit 12 St Martins Way, St Martins Business Centre, Bedford, MK42 0LF, U.K.,Tel:+44-1234-245291, Fax:+44-1234-245293 • E-mail:lifesciences@fujifilm.co.uk

富士胶片(中国)投资有限公司 31st floor, Hong Kong New World Tower, No.300 Huai Hai Zhong Road, Shanghai, P.R China, Tel:+86-21-3302-4655 ext.363, Fax:+86-21-6384-3322 • E-mail:wgxiang@fujifilm.com.cn

FUJIFILM Medical Systems U.S.A., Inc. Tel:+1-866-902-3854 Fax:+1-203-327-6485 • E-mail:don.wilke@fujimed.com

<http://lifescience.fujifilm.com/>